



Shark S900P Side Scan Sonar

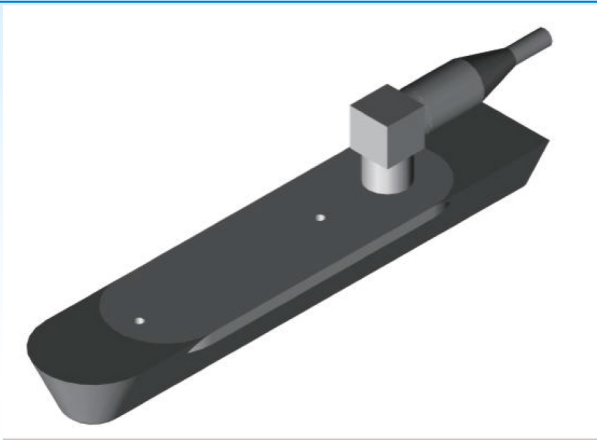
www.lcsonar.com

Low power consumption

High cost performance

Wide scanning range

Flexible customization



Shark-S900P side scan sonar is a small, portable, easy-to-use, ultra-low-power high-resolution sonar. It has 900khz chirp FM signal processing technology, with a range of 45 meters on each side to ensure sufficient coverage width, and 0.5° beam angle along the track direction to ensure high-resolution imaging.

Shark-S900P is composed of a single transducer array and an electronic bin. The electronic bin is also divided into sealed version and non sealed version, which can be embedded and used by unmanned ships or underwater robots and other platforms, and can also be fixed and installed through brackets to meet various needs. The transducer array structure is reliable and durable, small and light, and the underwater pressure resistance depth is up to 1000 meters. The system is designed with ultra-low power consumption, which can be directly powered by DC battery.

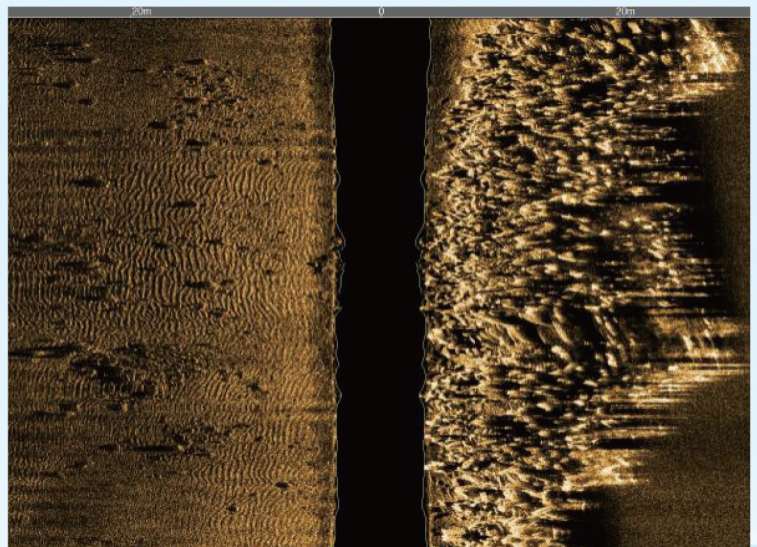
Autonomous Otech software has the functions of sonar image display, line planning and navigation, track tracking and coverage display, data recording and playback, target management and export, multi window display of sensor information, etc. It can output standard xtf format data, support third-party post-processing software processing, and can be customized according to specific needs.

Features

- Compact, portable, easy to use, high reliability
- Chirp FM signal and CW continuous pulse signal can be switched online in real time
- Ultra low power consumption design, battery powered, long-time operation
- Stainless steel 1000 meter withstand voltage
- Otech independent multi-function software can be upgraded and updated regularly and free of charge

Applications

- Hydrographic Surveys
- Geophysical Surveys
- Pier/Harbor Wall Inspections
- Archaeological Surveys, wreck Hunting etc



Beijing Lcocean Science and Technology Co. Ltd

Address: Room. 1703, Jinyanlong Bldg., Xisanqi, Changping Area Beijing, 100094 China

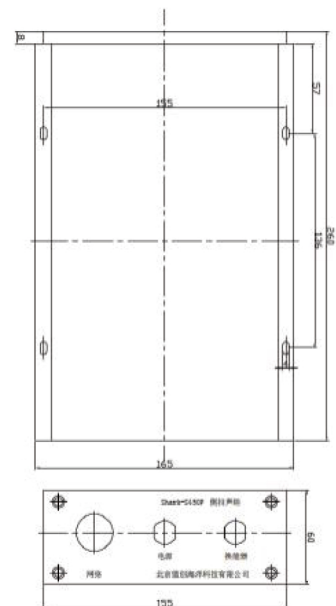
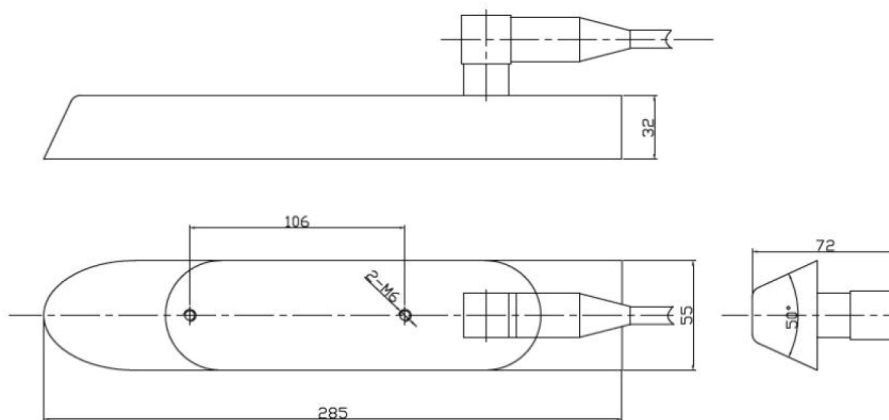
Tel: 0086-10-60789808 E-mail: zhangkui@lcsonar.com <http://www.lcsonar.com/en.html>



Shark-S900P Side Scan Sonar

www.lcsonar.com

Sonar Specifications	Shark-S900P
Frequency	900kHz
Pulse Type	CW & LFM CHIRP
Maximum Range	45M
Beam Width	Horizontal : 0.5° ; Vertical : 45°
Resolution (h-range)	Along Track : 0.0075h ; Across Track : 1.25cm
Maximum Depth Rating	1000m
Transducer Size/Weight (air)	285mm*55mm (Length*width) /1kg
Unsealed Deck Unit Size /Weight (air)	260m*165mm*60mm / 1.8kg
Sealed Deck Unit Size /Weight (air)	240m*105mm (Length*Dia) / 2.1kg
Power Consumption	12VDC , 15W
Software OTech	Windows , NMEA 0183 Navigation Data Input ; OTSS、 XTF Output Data Format
Transducer Cable	2m



Beijing Lcocean Science and Technology Co. Ltd

Address: Room. 1703, Jinyanlong Bldg., Xisanqi, Changping Area Beijing, 100094 China

Tel: 0086-10-60789808 E-mail: zhangkui@lcsonar.com <http://www.lcsonar.com/en.html>