

# Shark-S900U Side Scan Sonar



[www.lcsonar.com](http://www.lcsonar.com)



**Low Power Consumption**  
**Cost-effective, Affordable**  
**Long Range Coverage**  
**Easy to Integrate into USV/ROV/AUV**

Shark-S900U is supplied as two separate transducers and an electronic module suitable for integration into most Remotely Operated Vehicles (ROVs), Unmanned Surface Vehicles (USVs), and also electronic components and transducers are housed in one case. Shark-S900U side scan sonar is an extremely compact and cost effective side scan sonar designed for ultra high resolution images. The sonar is reliable and durable.

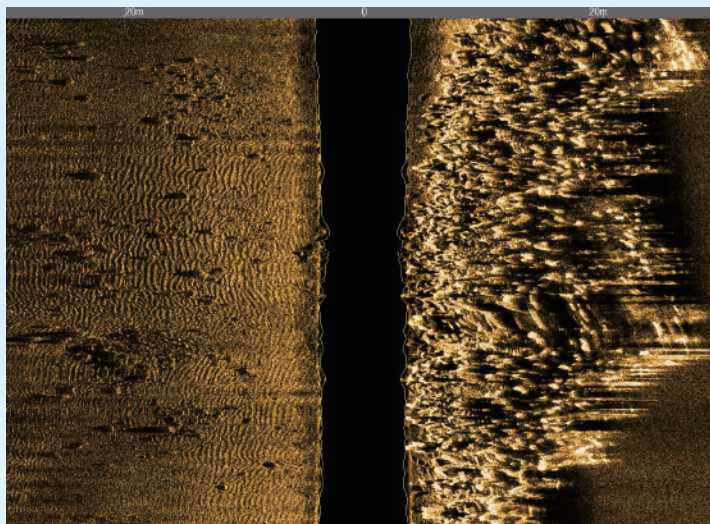
OTech software is equipped with the function of sonar image display, navigation, data recording and replay, target management and output and sensor information multi-window display. It can output the data with standard XTF format which can be processed with the third party processing software, and also can be customized according to the requirements.

## Features

- Small, Lightweight and Easy
- Ultra High Resolution Images
- CHIRP and CW Sonar Transmission Modes
- Low Power Consumption
- OTech Acquisition Software, Free Update

## Applications

- Hydrographic Surveys
- Geophysical Surveys
- Cable and Pipeline Surveys
- Wide Area Search and Recovery
- Pier/Harbor Wall Inspections
- Archaeological Surveys
- Wreck Hunting



Add: Room 1703, Jin Yanlong Building, Xisanqi Street, Changping District, Beijing 100096, China  
Tel: +86-10-60789808      Email: [oceansuv@163.com](mailto:oceansuv@163.com)      [Http://www.lcsonar.com](http://www.lcsonar.com)



# Shark-S900U Side Scan Sonar



[www.lcsonar.com](http://www.lcsonar.com)

Sonar Specifications	Shark-S900U
Frequency	900kHz
Pulse Type	CW & LFM CHIRP
Maximum Range	75m
Beam Width	Horizontal : 0.2° ; Vertical : 45°
Resolution ( h-range )	Along Track : 0.003h ; Across Track : 1.25cm
Depression Angle	15°
Maximum Depth Rating	300m (Aluminum) ; 1000m (316 Stainless Steel)
Towfish Size/Weight (integrated)	637mm*105mm (Length*Diameter) / 6kg
Transducer Size/Weight (separated)	517mm*58mm (Length*Width) / 2kg (Beam Width 0.2°) 317mm*58mm (Length*Width) / 1.5kg (Beam Width 0.3°)
Electronics Module (separated)	200mm*155mm (Length*Width) / 1.7kg (Unsealed) 240mm*105mm (Length*Diameter) / 2.1kg (Sealed)
Power Consumption	24V DC , 15W
Software OTech	Windows , NMEA 0183 Navigation Data Input ; OTSS, XTF Output Data Format
Tow Cable	Kevlar , Standard Length: 2m ( Optional )



Add: Room 1703, Jin Yanlong Building, Xisanqi Street, Changping District, Beijing 100096, China  
Tel: +86-10-60789808      Email: [oceansuv@163.com](mailto:oceansuv@163.com)      [Http://www.lcsonar.com](http://www.lcsonar.com)