



Shark-S450S Side Scan Sonar

www.lcsonar.com



Low Power Consumption
Small, Lightweight and Easy
Cost-effective, Affordable
High Resolution Images

Shark-S450S is the affordable high performance towed side scan sonar which produces high resolution images. It provides long range coverage and high resolution images to 150m per side at 450 kHz, utilising advanced digital CHIRP acoustic technology developed.

A strong stainless steel towfish, a high strength Kevlar cable, a splashproof deck unit and the OTech software are included in the sonar system. The system is designed with ultra-low power consumption and can be powered with AC or DC power. Shark-S450S is small, light and rugged, and can be easily operated by one person.

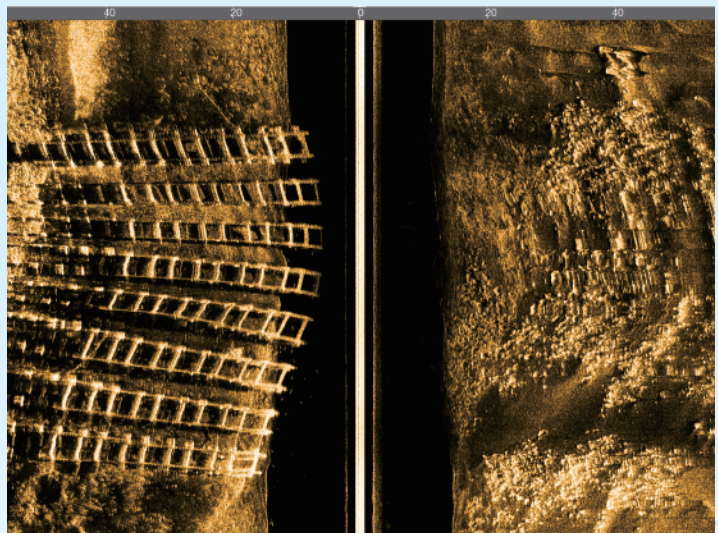
OTech software is equipped with the function of sonar image display, navigation, data recording and replay, target management and output and sensor information multi-window display. It can output the data with standard XTF format which can be processed with the third party processing software, and also can be customized according to the requirements.

Features

- Small, Lightweight and Easy
- Long Range Coverage and High Resolution Images
- CHIRP and CW Sonar Transmission Modes
- 316 Stainless Steel Towfish, Depth Rated to 1000m
- OTech Acquisition Software, Free Update

Applications

- Hydrographic Surveys
- Geophysical Surveys
- Cable and Pipeline Surveys
- Wide Area Search and Recovery
- Pier/Harbor Wall Inspections
- Archaeological Surveys
- Wreck Hunting



Add: Room 1703, Jin Yanlong Building, Xisanqi Street, Changping District, Beijing 100096, China

Tel: +86-10-60789808

Email: oceansuv@163.com

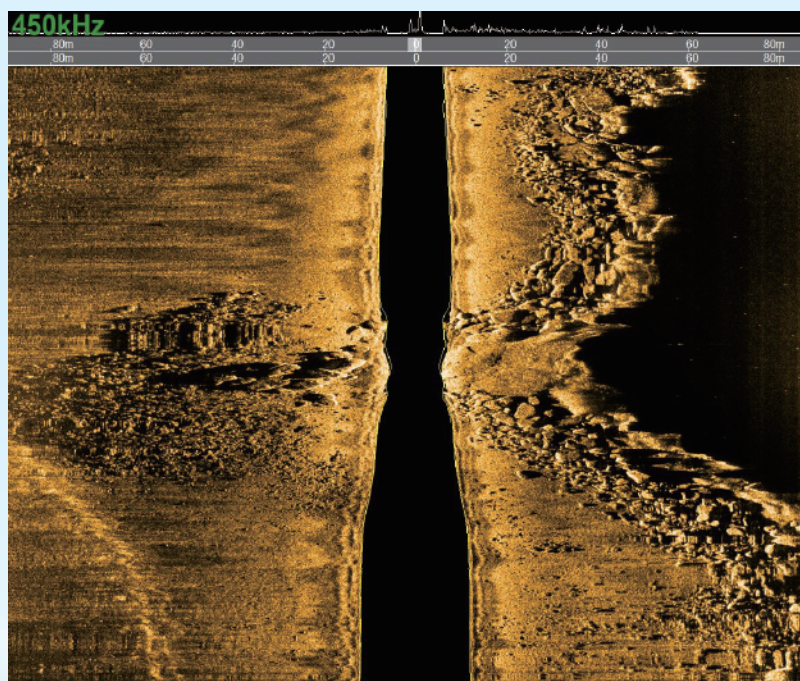
[Http://www.lcsonar.com](http://www.lcsonar.com)



Shark-S450S Side Scan Sonar

www.lcsonar.com

Sonar Specifications	Shark-S450S
Frequency	450kHz
Pulse Type	CW & LFM CHIRP
Maximum Range	150m
Beam Width	Horizontal : 0.3° ; Vertical : 45°
Resolution (h-range)	Along Track : 0.005h ; Across Track : 1.25cm
Depression Angle	15°
Maximum Depth Rating	1000m (316 Stainless Steel)
Towfish Size/Weight (air)	767mm*105mm (Length*Diameter) / 13kg
Deck Unit Size /Weight	170mm*120mm*70mm / 0.8kg
Power Consumption	110/220VAC , 15W
Software OTech	Windows , NMEA 0183 Navigation Data Input ; OTSS、XTF Output Data Format
Tow Cable	Kevlar , Standard Length: 20m (Optional)



Add: Room 1703, Jin Yanlong Building, Xisanqi Street, Changping District, Beijing 100096, China
 Tel: +86-10-60789808 Email: oceansuv@163.com Http://www.lcsonar.com