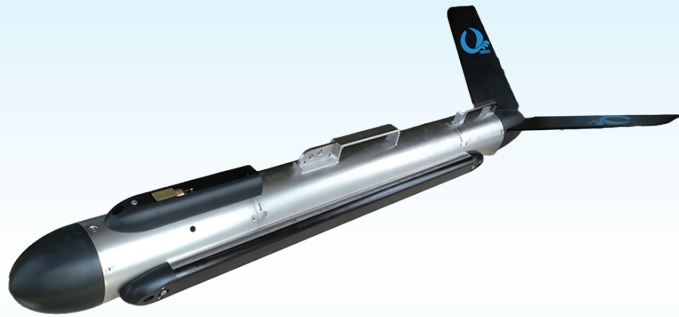




Shark-S450D Side Scan Sonar

www.lcsonar.com



Easy to Use

Long Range Coverage

Ultra High Resolution Image

Low Power Consumption

Shark-S450D side scan sonar is a versatile multi-purpose sonar, providing an ideal combination of range and resolution. It is designed with a dual simultaneous frequency operation of 450/900 kHz and advanced digital CHIRP signal processing technology, which is optimized to provide 0.2° narrow horizontal beam width. It is ideally suited for customers that require long range and ultra high resolution images in order to detect very small targets.

A strong stainless steel towfish, a high strength Kevlar cable, a splashproof deck unit and the OTech software are included in the sonar system. The system is designed with ultra-low power consumption and can be powered with AC or DC power. The sonar is reliable and durable, and can be easily operated by one person.

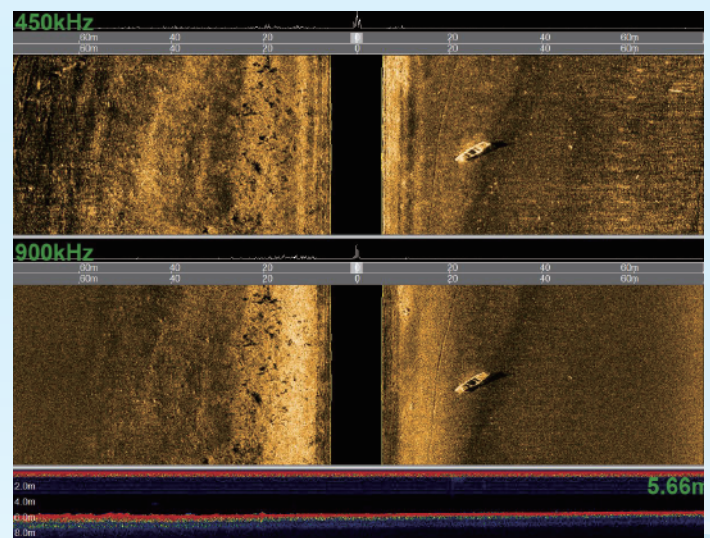
OTech software is equipped with the function of sonar image display, navigation, data recording and replay, target management and output and sensor information multi-window display. It can output the data with standard XTF format which can be processed with the third party processing software, and also can be customized according to the requirements.

Features

- Dual Frequency, Simultaneous Operation
- Long Range Coverage and Ultra High Resolution Images
- CHIRP and CW Sonar Transmission Modes
- Standard Heading, Pitch, Roll and Pressure Sensors
- Build-in Echosounder, Accurately Tracks Towfish Height
- 316 Stainless Steel Towfish, Depth Rated to 1000m
- OTech Acquisition Software, Free Update

Applications

- Hydrographic Surveys
- Geophysical Surveys
- Cable and Pipeline Surveys
- Wide Area Search and Recovery
- Pier/Harbor Wall Inspections
- Archaeological Surveys
- Wreck Hunting



Add: Room 1703, Jin Yanlong Building, Xisanqi Street, Changping District, Beijing 100096, China

Tel: +86-10-60789808

Email: oceansuv@163.com

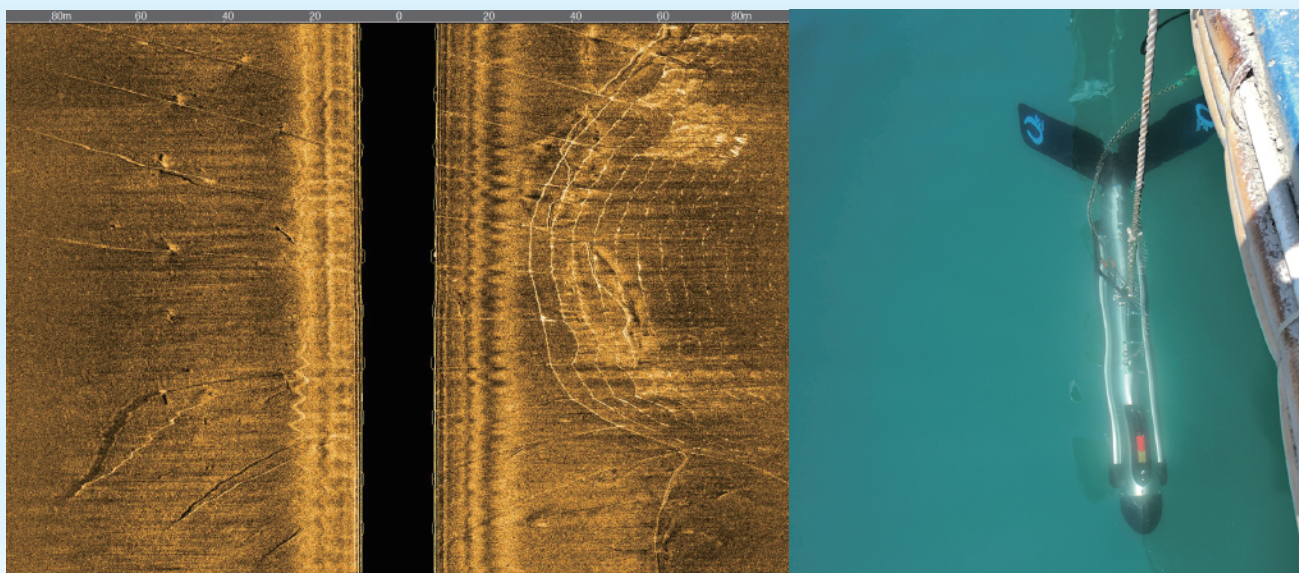
[Http://www.lcsonar.com](http://www.lcsonar.com)



Shark-S450D Side Scan Sonar

www.lcsonar.com

Sonar Specifications	Shark-S450D
Frequency	450kHz & 900kHz , Dual Simultaneous
Pulse Type	CW & LFM CHIRP
Maximum Range	150m @ 450kHz ; 75m @ 900kHz
Beam Width	Horizontal : 0.2° @ 450kHz, 0.2° @ 900kHz ; Vertical : 45°
Resolution (h-range)	Along Track : 0.003h @450kHz, 0.003h @900kHz ; Across Track : 1.25cm
Depression Angle	Tilted Down 10° , 15° , 20° , Default 15°
Maximum Depth Rating	1000m (316 Stainless Steel)
Standard Towfish Sensors	Roll、Pitch、Heading、Depth、Altitude
Towfish Size/Weight(air)	1143mm*105mm (Length*Diameter) /25kg
Deck Unit Size /Weight	170mm*120mm*70mm / 0.8kg
Power Consumption	110/220VAC , 30W
Software OTech	Windows , NMEA 0183 Navigation Data Input ; OTSS、 XTF Output Data Format
Tow Cable	Kevlar , Standard Length: 50m (Optional) ; Winches Available



Add: Room 1703, Jin Yanlong Building, Xisanqi Street, Changping District, Beijing 100096, China
 Tel: +86-10-60789808 Email: oceansuv@163.com Http://www.lcsonar.com